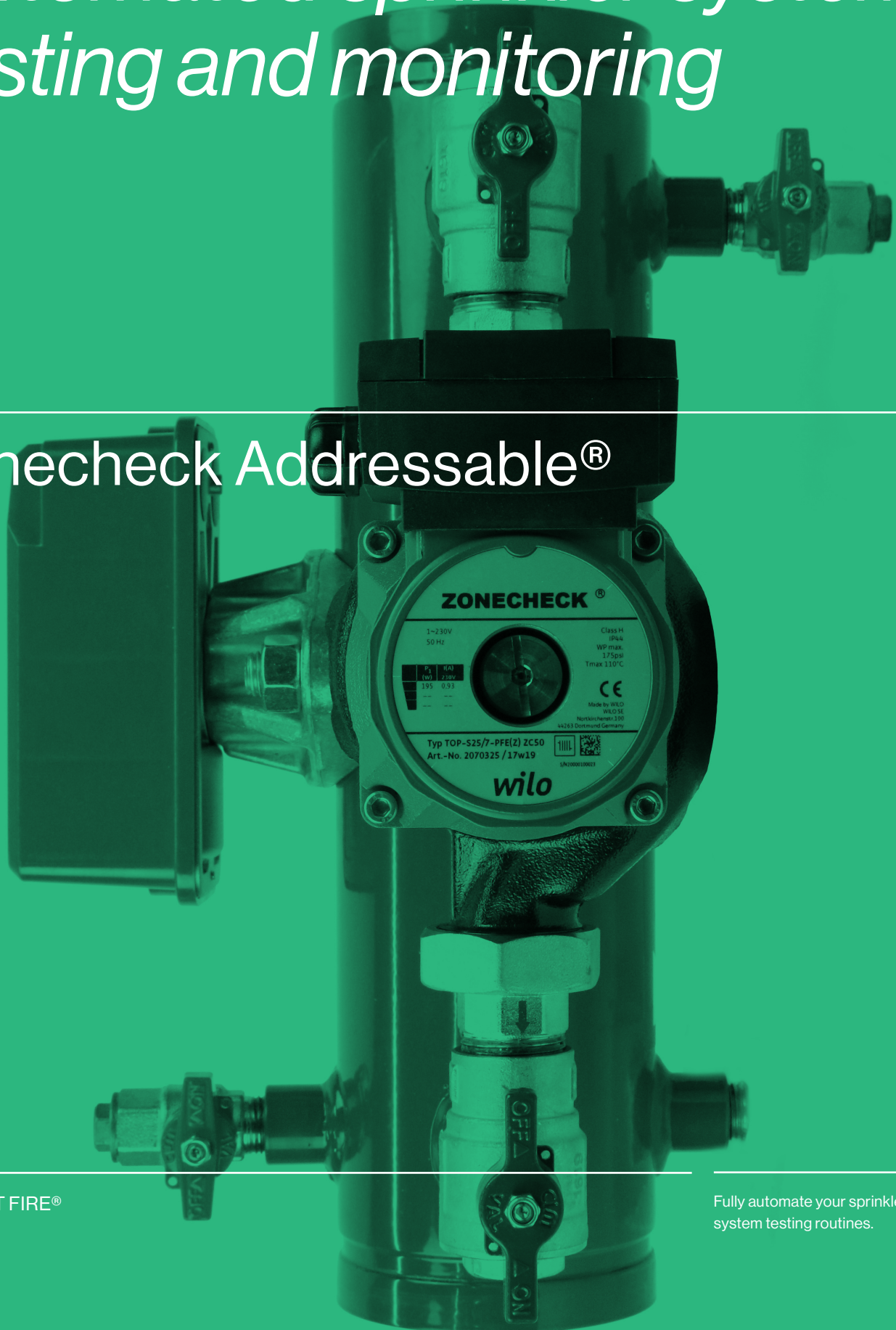

Automated sprinkler system testing and monitoring

Zonecheck Addressable®



PROJECT FIRE®

Fully automate your sprinkler system testing routines.

The only approved fire sprinkler alarm, monitoring and automated testing system.

Take complete control of your sprinkler system with Zonecheck Addressable, the approved, smart, life safety system that monitors and manages your sprinkler system remotely, instantly notifies you of the location of any fire or faults, and fully automates your testing routine. It brings peace of mind for monitoring, testing and code compliance.

Zonecheck Addressable is the only approved fire sprinkler alarm, monitoring and automated testing system. It utilises the latest state-of-the-art technology to provide a smart fire strategy for a building's sprinkler system. The system gives building owners/tenants the ability to monitor and manage sprinkler system components, alerting you of any specific faults and locations via the controller.

FULL CONTROL

From the controller you can program a building's flow-switch testing routine. Testing can be carried out automatically in the background or at the touch of a button with the addition of a printed test record and internal memory log, providing peace of mind for code compliance. The controller can also differentiate a fire condition signal from a test ('soft testing'), enabling testing to be carried out independently of all other auxiliary equipment e.g. smoke vents, fire doors and escalators, isolating and eliminating the risk of false alarms. This allows a sprinkler system to be effectively managed from one central location without the need to organise third parties or contractors to carry out testing.

TAKE COMPLETE
CONTROL OF
YOUR SPRINKLER
SYSTEM WITH
ZONECHECK
ADDRESSABLE,
BRINGING PEACE
OF MIND FOR
MONITORING,
TESTING
AND CODE
COMPLIANCE.

System benefits.

OPEX SAVINGS

Keep operational costs down with Zonecheck's efficient method of routine testing and reduced facilities management.

AUTOMATED MANAGEMENT

The controller takes care of testing routines for you in the background notifying you if there are any issues.

SYSTEM MONITORING

Pro-active monitoring of building's sprinkler system and components.

SUSTAINABLE

Saves water, energy and labour reducing the carbon footprint of managing a sprinkler system.

CODE COMPLIANT

All managed components stay fully code compliant. Full pass/fail test and event log provided.

INTEGRATED TECHNOLOGY

Easily integrated into a building's fire alarm system or BMS.

SYSTEM MONITORING

Every sprinkler component installed on the loop is constantly being monitored via the IMMs e.g. flow-switches, zone valves, trace heating, pump house, relaying information to and from the controller, something that other addressable systems simply can not do.

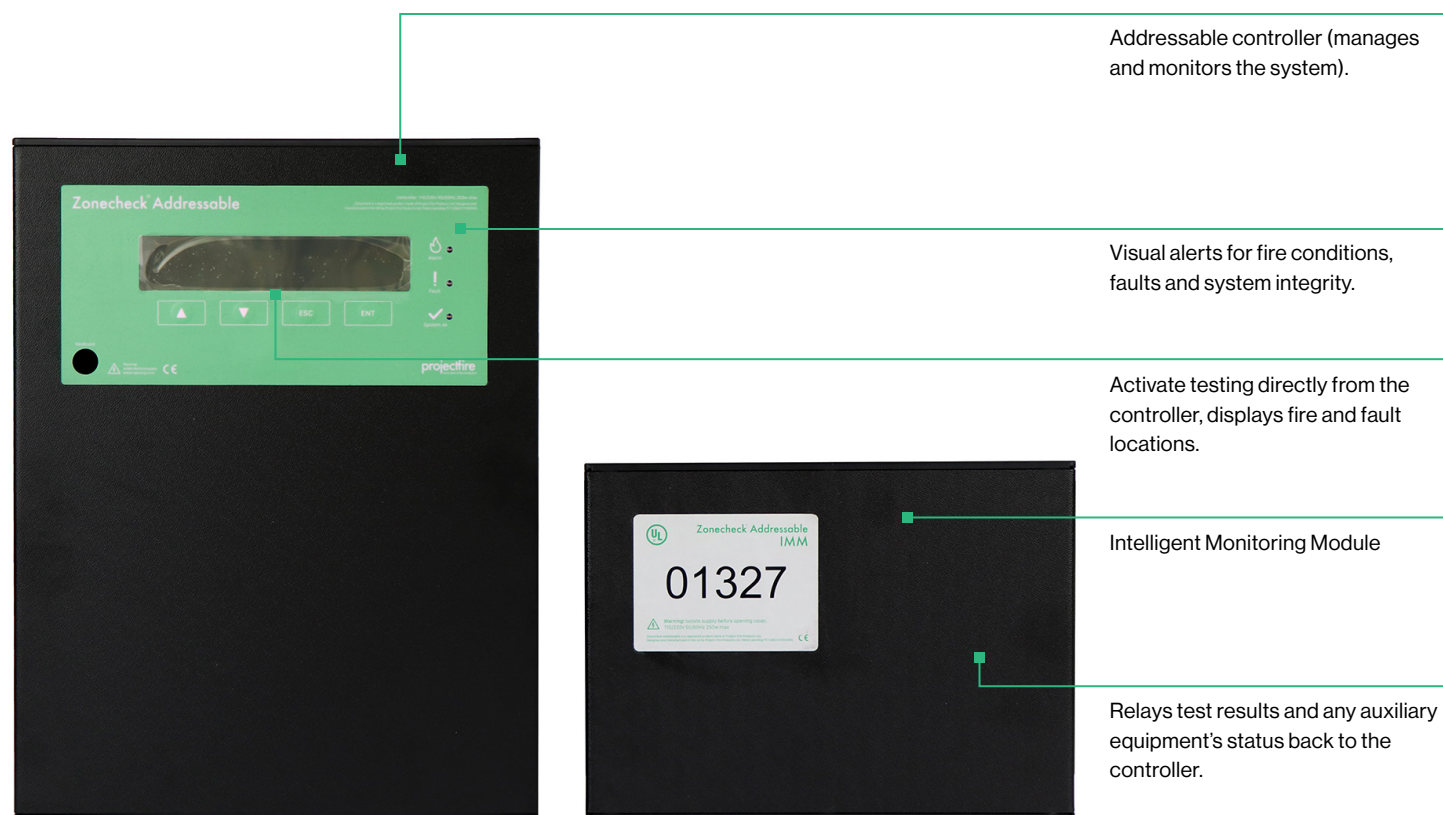
CONNECTING TO OTHER DEVICES

The controller has the ability to connect to a wide range of panels and devices such as conventional fire alarm panels, addressable fire alarm panels, indicator panels and building management systems (BMS). The controller can output signals via standard relay, smart link (Kentec Sycro panels), IDENT panel or SCADA (Supervisory Control And Data Acquisition) Modbus protocols.

ADDITIONAL INFORMATION

The system is wired throughout using FP200 or equivalent fire resistant cable and can support a loop length of up to 4.5km. Internal batteries continue to provide 'life safety' monitoring for a period of at least 24 hours, even in the event of a power failure. Project Fire's Bellcheck and Gemini can be incorporated into our addressable system, creating a wider fully encompassing fire strategy.

TESTING CAN BE CARRIED OUT INDEPENDENTLY OF ALL OTHER AUXILIARY EQUIPMENT E.G. SMOKE VENTS, FIRE DOORS AND ESCALATORS, ISOLATING AND ELIMINATING THE RISK OF FALSE ALARMS.

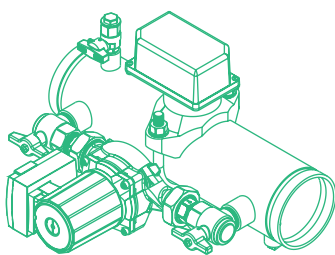


APPROVALS

The system is approved to UL 346, meaning the controller, IMMs and Zonechecks are approved as a system for testing and monitoring flow-switches. Zonecheck Addressable also complies with key principles of life safety codes and is compliant to BS EN 12845 & BS EN 12259-5 standards. Other addressable systems are typically fabricated on-site and are not approved to any standards.

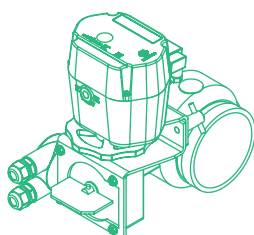


System components



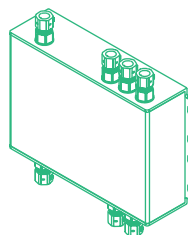
ZONECHECK

Automatic flow-switch tester, circulates water around the flow-switch so there is no need to discharge water.



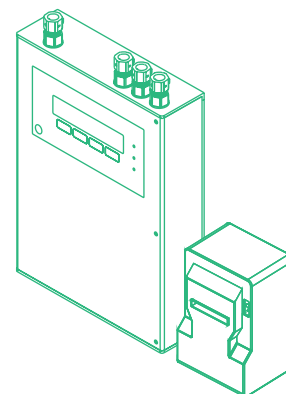
VALVECHECK

The actuator exercises the local monitored valve automatically as per code standards. You can also remotely control the zone valve from the controller.



INTELLIGENT MONITORING MODULE

Each Zonecheck requires its own IMM. IMM's initiate testing and can also monitor auxiliary equipment such as local zone valves, trace heating, smoke vents and pump house signals, relaying it's status to the controller.



CONTROLLER & PRINTER

Every IMM is wired in a looped system back to the controller. From here you can manage the entire addressable system.

An optional LED identification (IDENT) panel is available, utilising an intelligent link from our addressable controller.

WANT TO KNOW MORE ABOUT AUTOMATED TESTING AND THE EASIEST WAY TO REMAIN CODE COMPLIANT? CONTACT A MEMBER OF OUR TEAM.

Designed and manufactured in the UK by Project Fire Products Ltd.

01889 271271
info@projectfire.co.uk
www.projectfire.co.uk
www.addressable.info

Zonecheck Addressable® is a registered trademark. © Project Fire Products Ltd. 2020
Addressable system patent no. GB1606263.0.